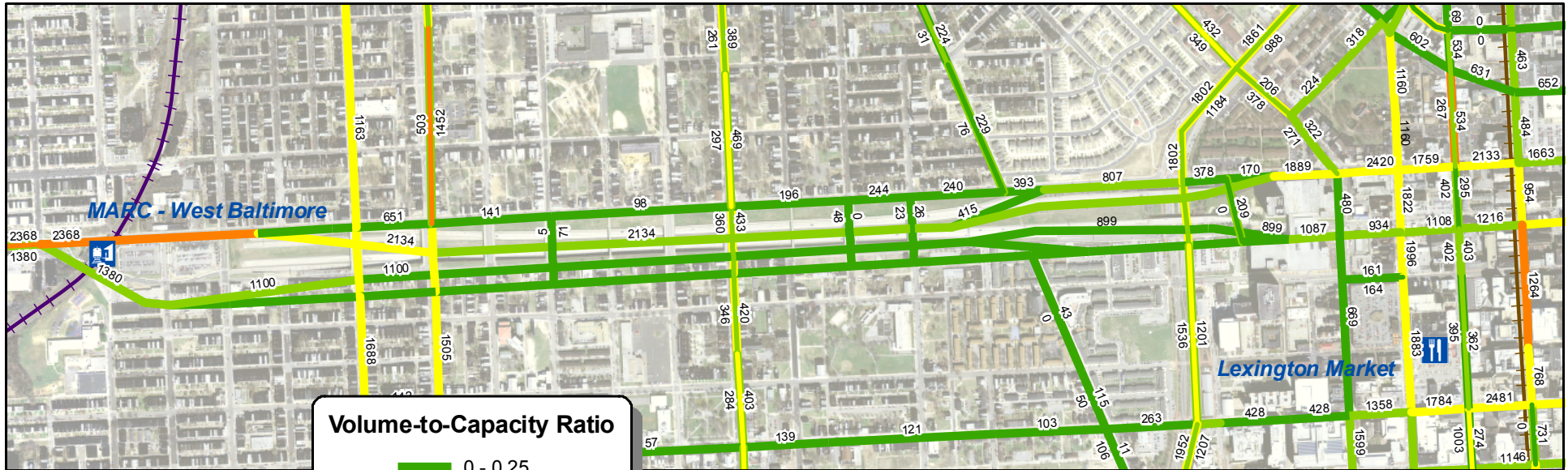


Highway to Nowhere

2000 Peak PM Traffic Congestion - Volume/Capacity



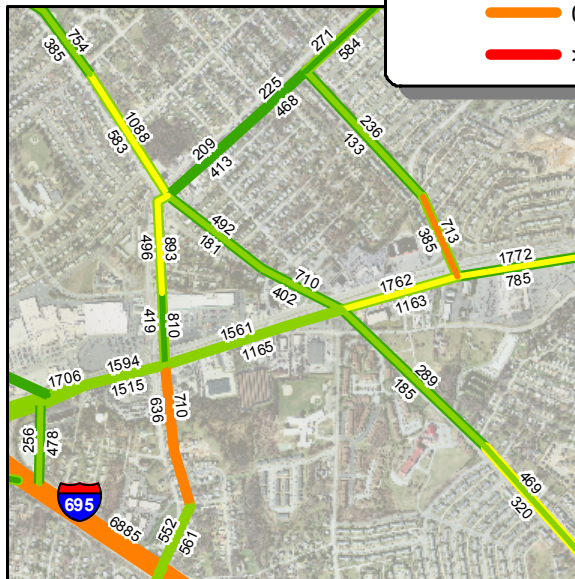
HTN - East



1 inch equals 0.2 miles

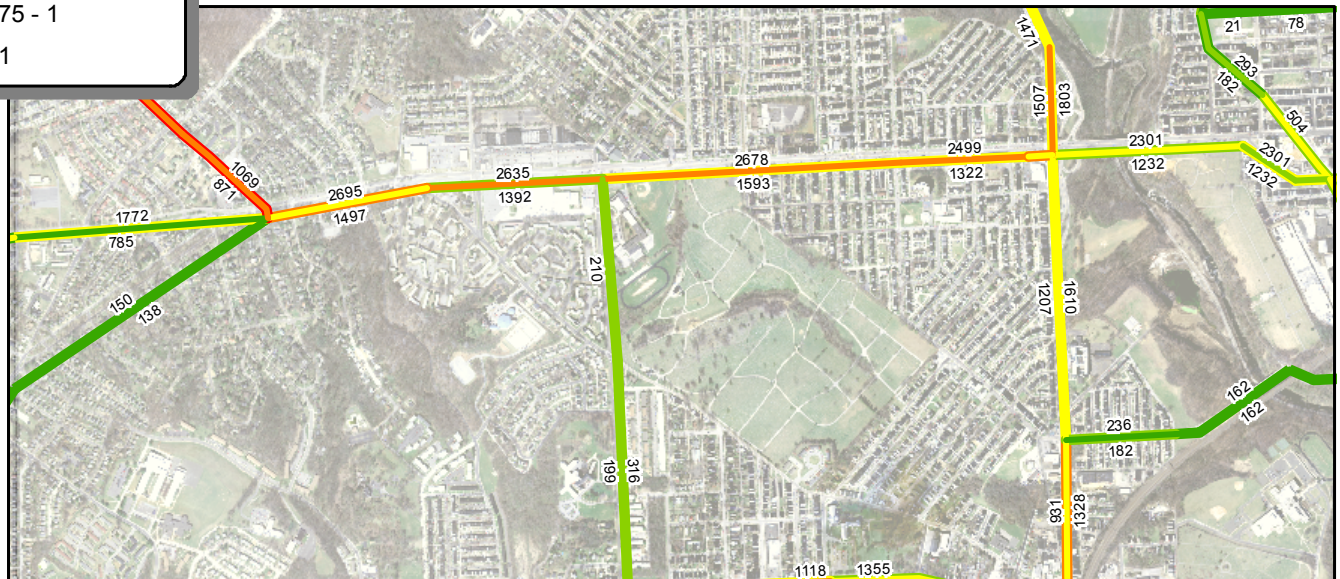
- Labels indicate Peak PM Traffic Volume (hourly mean)

HTN - Baltimore Co



1 inch equals 0.38 miles

HTN - West



Source: BMC Travel Demand Model