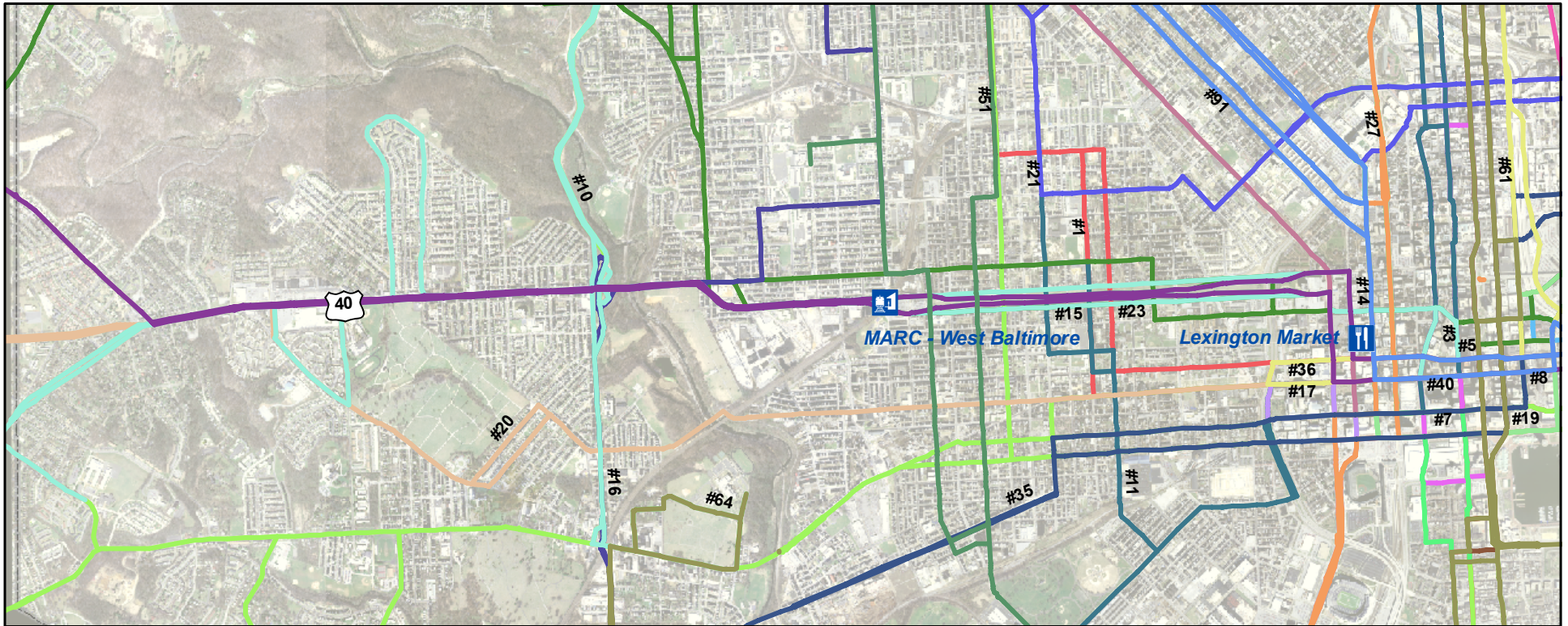


# Highway to Nowhere

## MTA Bus Routes Serving the US 40 Corridor



1 inch equals 0.55 miles

Source: BMC, MTA

### Bus Routes

- |  |   |   |
|--|---|---|
| <span style="color: red;">—</span> 1 SINAI - FORT McHENRY                  | <span style="color: orange;">—</span> 20 SECURITY SQUARE MALL - DUNDALK       | <span style="color: lightblue;">—</span> 5 MONDAWMIN - CEDONIA          |
| <span style="color: limegreen;">—</span> 10 RT. 40/ROLLING - BULLNECK RD.  | <span style="color: blue;">—</span> 21 FELS POINT - CAREY & CUMBERLAND        | <span style="color: green;">—</span> 51 ROGERS STATION-PATAPSCO STATION |
| <span style="color: darkblue;">—</span> 11 GBMC/GOUCHER - RIVERVIEW        | <span style="color: cyan;">—</span> 23 RT40 & ROLLING - FOX RIDGE             | <span style="color: brown;">—</span> 61 BELLEMORE - LIGHT & LEE         |
| <span style="color: green;">—</span> 14 STATE CENTER - ANNAPOLIS           | <span style="color: orange;">—</span> 27 PLAZA STATION - PORT COVINGTON       | <span style="color: olive;">—</span> 64 NORTH AVE - CUTRIS BAY/ENERGY   |
| <span style="color: darkgreen;">—</span> 15 SECURITY MALL - PERRY HALL     | <span style="color: magenta;">—</span> 3 SHEPPARD PRATT/CROMWELL-DOWNTOWN     | <span style="color: pink;">—</span> 7 MONDAWMIN - CANTON                |
| <span style="color: darkblue;">—</span> 16 MONDAWMIN - BROOKLYN HOMES      | <span style="color: darkblue;">—</span> 35 WHITEMARSH MALL - U.M.T.C.         | <span style="color: pink;">—</span> 8 LUTHERVILLE - UMTC                |
| <span style="color: purple;">—</span> 17 PATAPSCO STATION-PARKWAY CENTER   | <span style="color: yellowgreen;">—</span> 36 NORTHERN PKWY & YORK - U.M.T.C. | <span style="color: blue;">—</span> 91 SINAI HOSPITAL - DOWNTOWN        |
| <span style="color: lightgreen;">—</span> 19 STATE CENTER - GOUCHER/CARNEY | <span style="color: purple;">—</span> 40 SECURITY/MIDDLE RIVER.               |   |